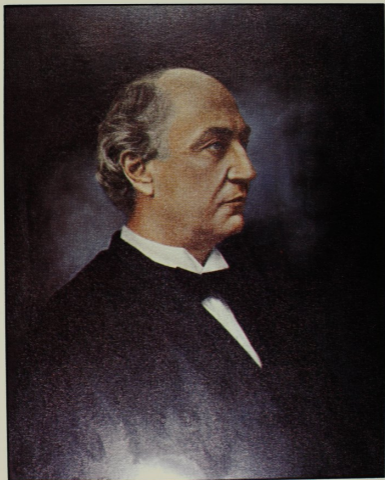


The Kansas Historical Quarterly

SPRING 1971



DAVID JOSEPH FLEWEN
BORN 1844, DIED 1917
REPRODUCED BY PERMISSION OF THE
KANSAS HISTORICAL SOCIETY

CONTENTS

	PAGE
THE FEDERAL JUDICIARY OF KANSAS <i>George Templar</i> ,	1
With portraits of Judges Archibald Williams, Mark W. Delahay, Cassius Gains Foster, William C. Hook, John C. Pollock, George T. McDermott, Richard J. Hopkins, Guy T. Helvering, and Arthur J. Mellott, <i>frontispiece</i> .	
SAMUEL C. POMEROY AND THE SENATORIAL ELECTION OF 1861, RECONSIDERED <i>Joseph G. Gambone</i> ,	15
With portraits of Samuel C. Pomeroy, and Marcus J. Parrott, <i>facing</i> p. 16; and James H. Lane, Charles Robinson, Martin F. Conway, and Thomas Ewing, Jr., <i>facing</i> p. 17.	
A WINTER ON THE PLAINS, 1870-1871—THE MEMOIRS OF LAWSON COOKE Edited by <i>Paul D. Riley</i> ,	33
THE MOSES HARMAN STORY <i>William Lemore West</i> ,	41
With portrait of Moses Harman, <i>facing</i> p. 48; and a reproduction of a portion of a page of his newspaper, <i>Lucifer, The Light-Bearer</i> , <i>facing</i> p. 49.	
CONGRESSMAN CLIFFORD HOPE'S CORRESPONDENCE WITH HIS CONSTITUENTS: A Conservative View of the Court-Packing Fight of 1937 <i>James C. and Eleanor A. Duram</i> ,	64
With portrait of Clifford R. Hope, Sr., <i>facing</i> p. 64.	
THE ANNUAL MEETING: Containing Reports of the Secretary, Treasurer, Executive and Nominating Committees; Election of Officers; the Society's "Statement of Position" on Its Proposed Reorganization; Memorial to Clifford R. Hope, Sr.; List of Directors of the Society,	81
BYPATHS OF KANSAS HISTORY	110
KANSAS HISTORY AS PUBLISHED IN THE PRESS	111
KANSAS HISTORICAL NOTES	113

The Kansas Historical Quarterly is published by the Kansas State Historical Society, 120 W. Tenth St., Topeka, Kan. 66612. It is distributed without charge to members of the Society; single issues, when available, may be purchased for \$1.25 each. Membership dues are: annual, \$5; supporting annual, \$10; life, \$50; patron annual, \$100 or more. Membership applications and dues should be sent to Edgar Langsdorf, treasurer.

Correspondence concerning articles for the *Quarterly* should be addressed to the managing editor. The Society assumes no responsibility for statements made by contributors.

Second-class postage has been paid at Topeka, Kan.

THE COVER

A portrait of David Josiah Brewer of Leavenworth, painted by Alan Sells. Brewer was a United States circuit judge, 1884-1889, and justice of the U. S. supreme court, 1889-1910. The painting hangs in the federal courtroom, Topeka, and this copy was obtained through the courtesy of Judge George Templar.

Justice Brewer was the first Kansan on the United States supreme court. The first native-born Kansan to serve on the court was Justice Charles Evans Whittaker, 1957-1962.